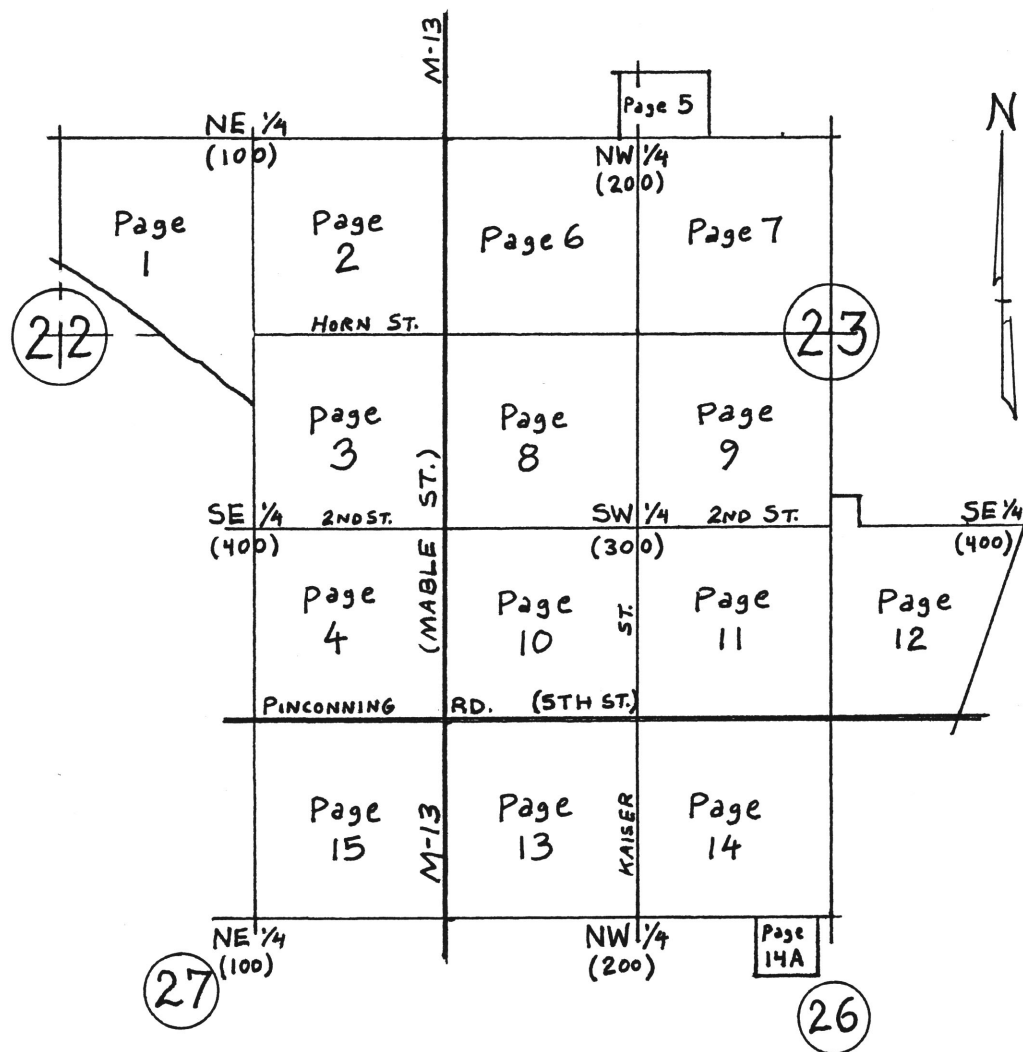


CITY OF PINCONNING PLATS

Tax ID Code	Plat	Lots	Location	Page(s)
09-180-B05	Assr's Plat of Al Berthiaume Subdivision		NW ¼ Sec 26 T17N R4E	14
09-180-B10	Al Berthiamue Subdivision		NW ¼ Sec 26 T17N R4E	14
09-180-B15	Brazeau Subdivision		NW ¼ Sec 26 T17N R4E	13
09-180-C05	H.M. Cliff's Addition		SE ¼ Sec 22 T17N R4E	
		Block 1		8
		Blocks 2-5		4
		Blocks 6-7		10
		Blocks 8-13		4
		Block 14		10
19-180-G05	Glenwood Estates		NE ¼ Sec 22 T17N R4E	2
09-180-P05	Pinconning, City of		SW ¼ Sec 23 T17N R4E	
		Blocks 1-3		11
		Blocks 4-12		10
		Blocks 13-16		8
		Blocks 17-19		10
09-180-P05	Amended Plat Block 7 City of Pinconning			10
09-180-P10	Plummer Addition		SW ¼ Sec 23 T17N R4E	11
09-180-R05	The Resmer Subdivision		NW ¼ Sec 26 T17N R4E	14
09-180-S05	Shallow River Subdivision		SW ¼ Sec 23 T17N R4E	9
09-180-W05	Willow Brook Subdivision		SE ¼ Sec 22 T17N R4E	3
09-180-W10	Bernard J. Whyte's Additon		SE ¼ Sec 22 T17N R4E	4

City of Pinconning -180-



G05
P05

P10

(Part of Sec. 23, T17N, R4E.)

Blk. 5 49
Blk. 6 50

51

5

52

1A-2